



Welcome...

To the Naval Station Norfolk Chambers Field Tree Obstruction Public Meeting



NAVAL STATION NORFOLK - CHAMBERS FIELD

Overview

- Established in 1917
- Home base of 17 squadrons including fixed wing, rotary wing, and tiltrotor
- Provides 24/7 aviation support services to DoD & commercial assets
 - Supports 50,000 flights/year
- Location of the ONLY Navy operated Air Mobility Command (AMC) terminal in the United States.
- The Primary DoD hub for transporting personnel and cargo in support of forward deployed forces.

Home based aircraft:



Transient aircraft:



Chambers Field is a critical aviation hub for operational readiness of the entire DoD

If tree obstructions are not removed, it will directly impact our ability to perform missions critical to our national security

Approximately 400 trees must be removed for operational necessity and FAA Regulations

Air Installation Compatible Use Zones (AICUZ)

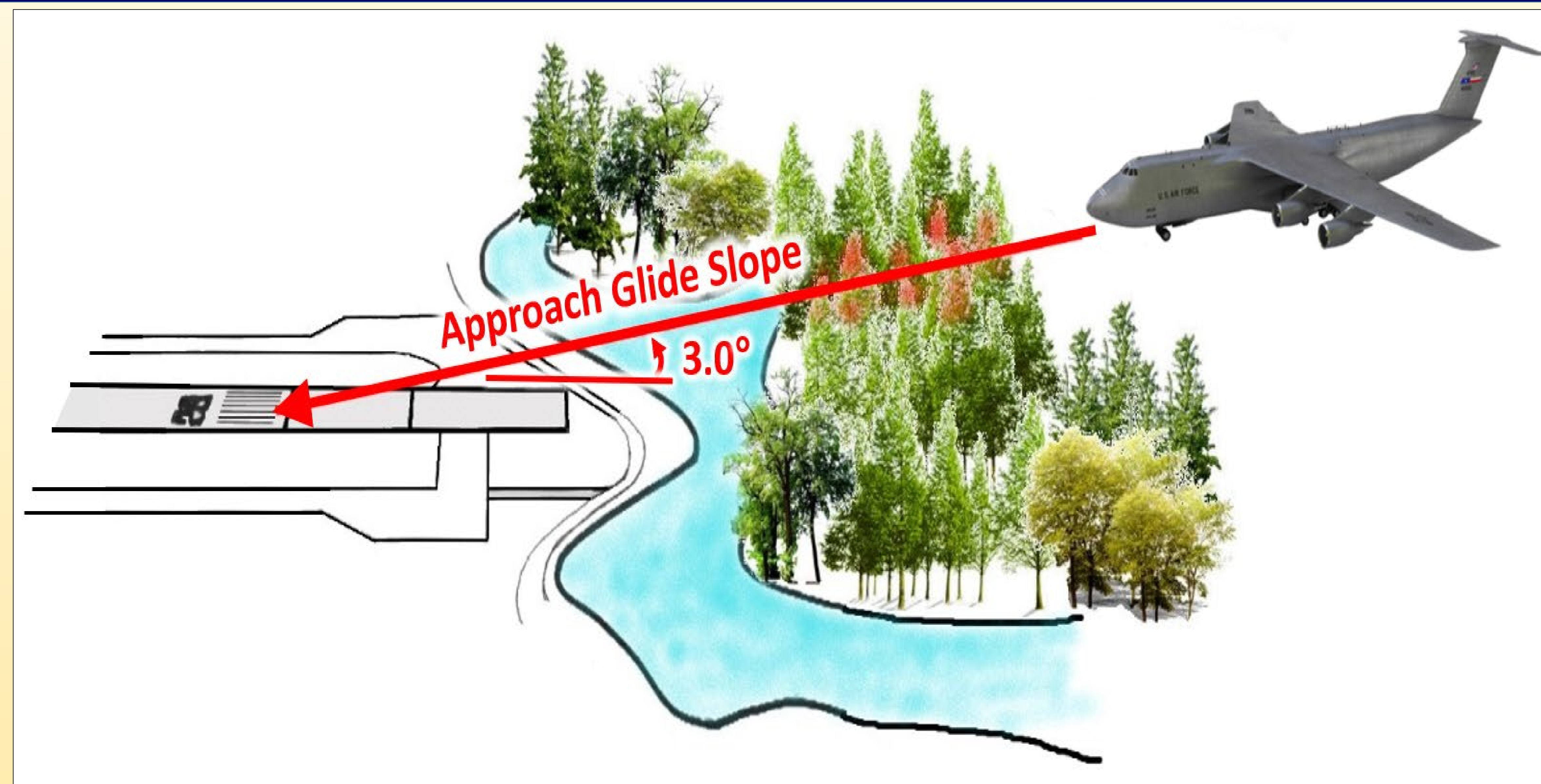


Approximately 400 trees must be removed for operational necessity and FAA Regulations

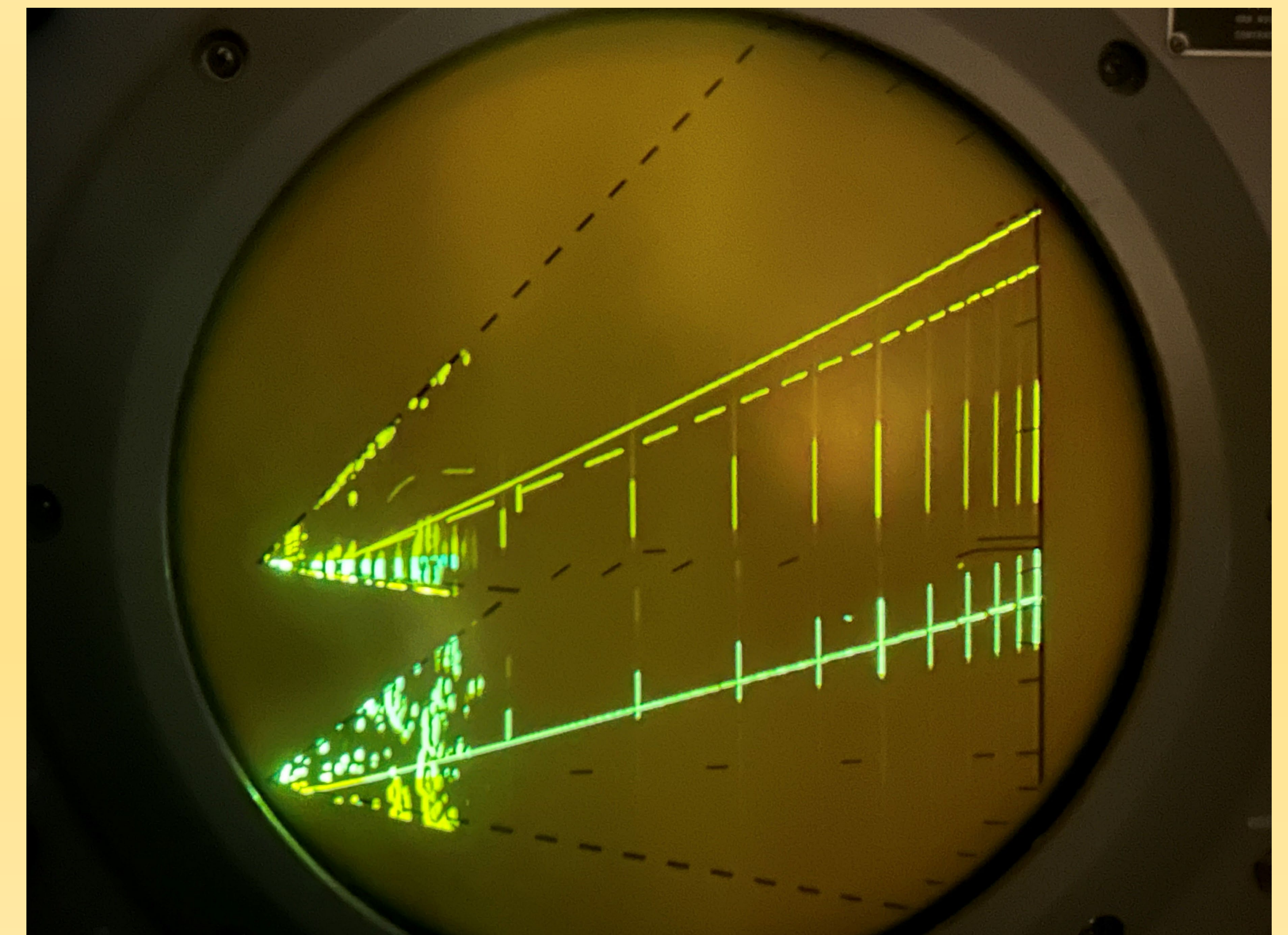
APPROACH GLIDE SLOPE

Glide Slope

- A **glide slope** is the vertical path an aircraft flies approaching an airfield.
- For safety, the glide slope must remain free of obstructions.
- Previous Navy actions to address glide-slope obstructions:
 - Over 100 tree obstructions were removed.
 - Shifted the start of the landing area as far as possible.
 - Approaching glide slope angle is as steep as possible for cargo aircraft.



Safety inspections identified that trees near the airfield are violating glide slope obstacle clearances.



Approximately 400 trees must be removed for operational necessity and FAA Regulations

OBSTRUCTIONS

Obstructions

Tree obstructions pose a safety risk for:

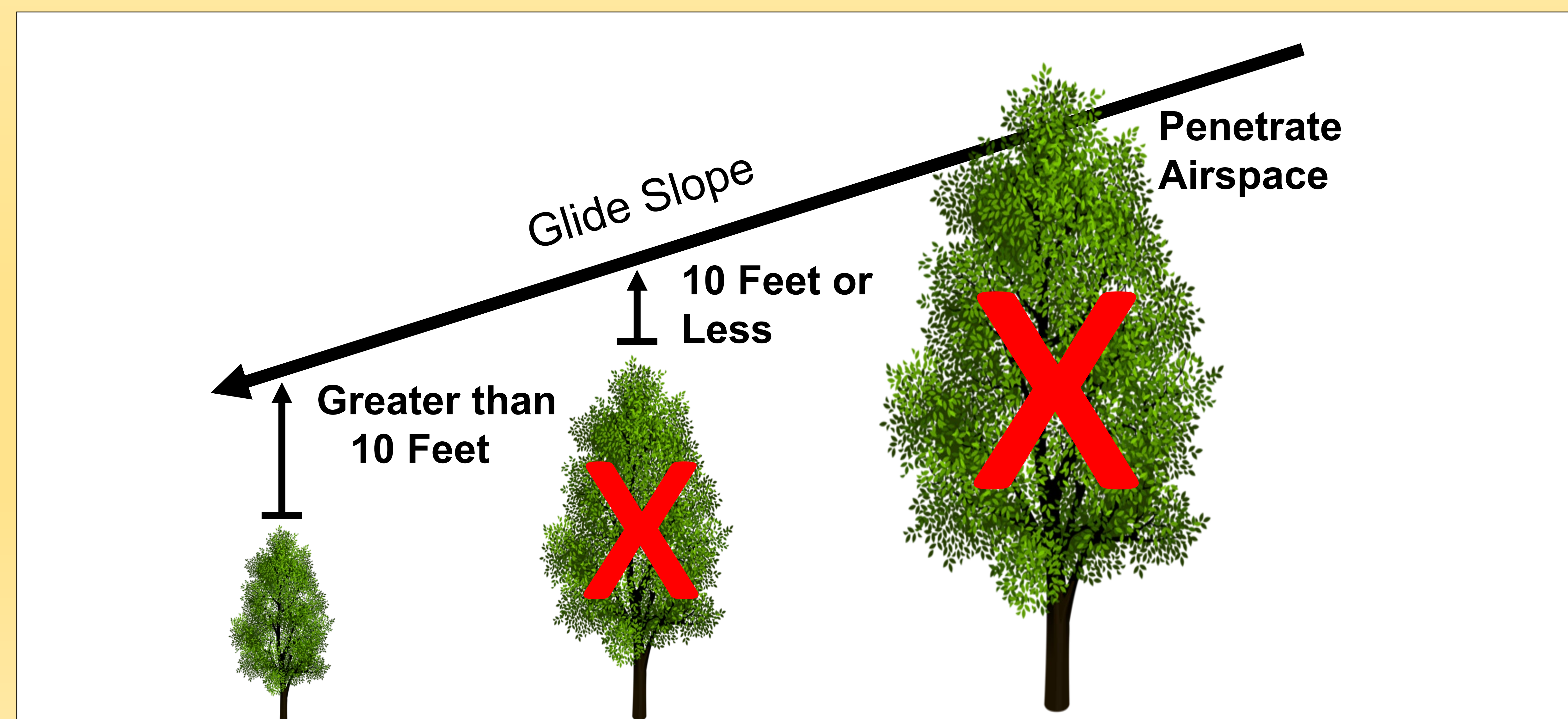
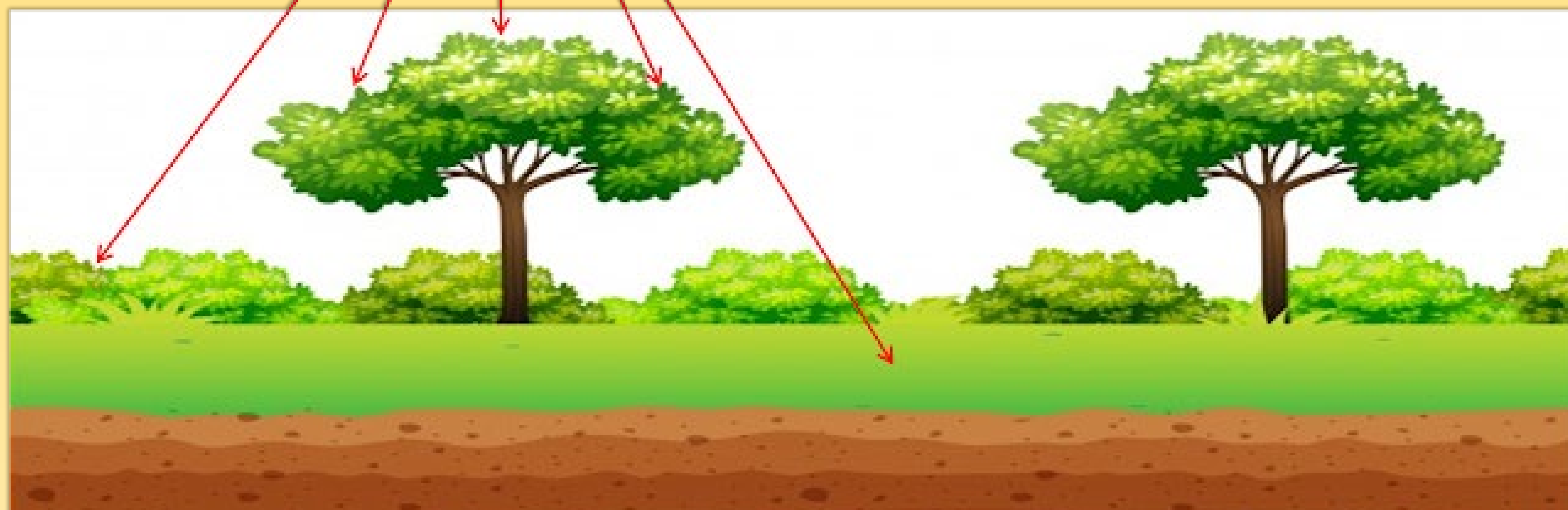
- Our Neighbors
- Aircrew/Passengers
- Aircraft

The assessment validated tree obstruction data:

- Airborne LIDAR – Light Detection and Ranging
- Ground-based GPS Survey Equipment

An assessment identified tree obstructions in the vicinity of Chambers Field.

- Approximately 400 trees need to be removed
- **Continued cooperation needed to identify all obstructions.**



Approximately 400 trees must be removed for operational necessity and FAA Regulations

OBSTRUCTION MAP



Approximately 400 trees must be removed for operational necessity and FAA Regulations

AVIGATION EASEMENT

The Navy is offering financial compensation.

Navy Easement

Permanent avigation easement

- Payment is based on fair market value of the airspace above your property and any trees/growth that need to be removed.
- Future growth is the homeowner's responsibility to maintain in accordance with the easement, which places limitations on height for manmade or natural objects.
- Easement is in addition to existing City of Norfolk zoning AICUZ ordinances.
- The City of Norfolk has an airport district overlay covering Merrimack Landing, Granby Shores and Commodore Point.
- Zoning Ordinance restricts certain uses of property that may overlap with Navy Easement.

What's Next?

- Once you agree to the offer and the sale is final, you'll receive a one-time payment, and the easement will be officially recorded in city records.
- To bring your property in compliance with the easement, **tree cutting will occur after you've signed the easement and received payment.**
- After the agreement is in place, the Navy will clear any existing plants that don't comply with the easement's restrictions.

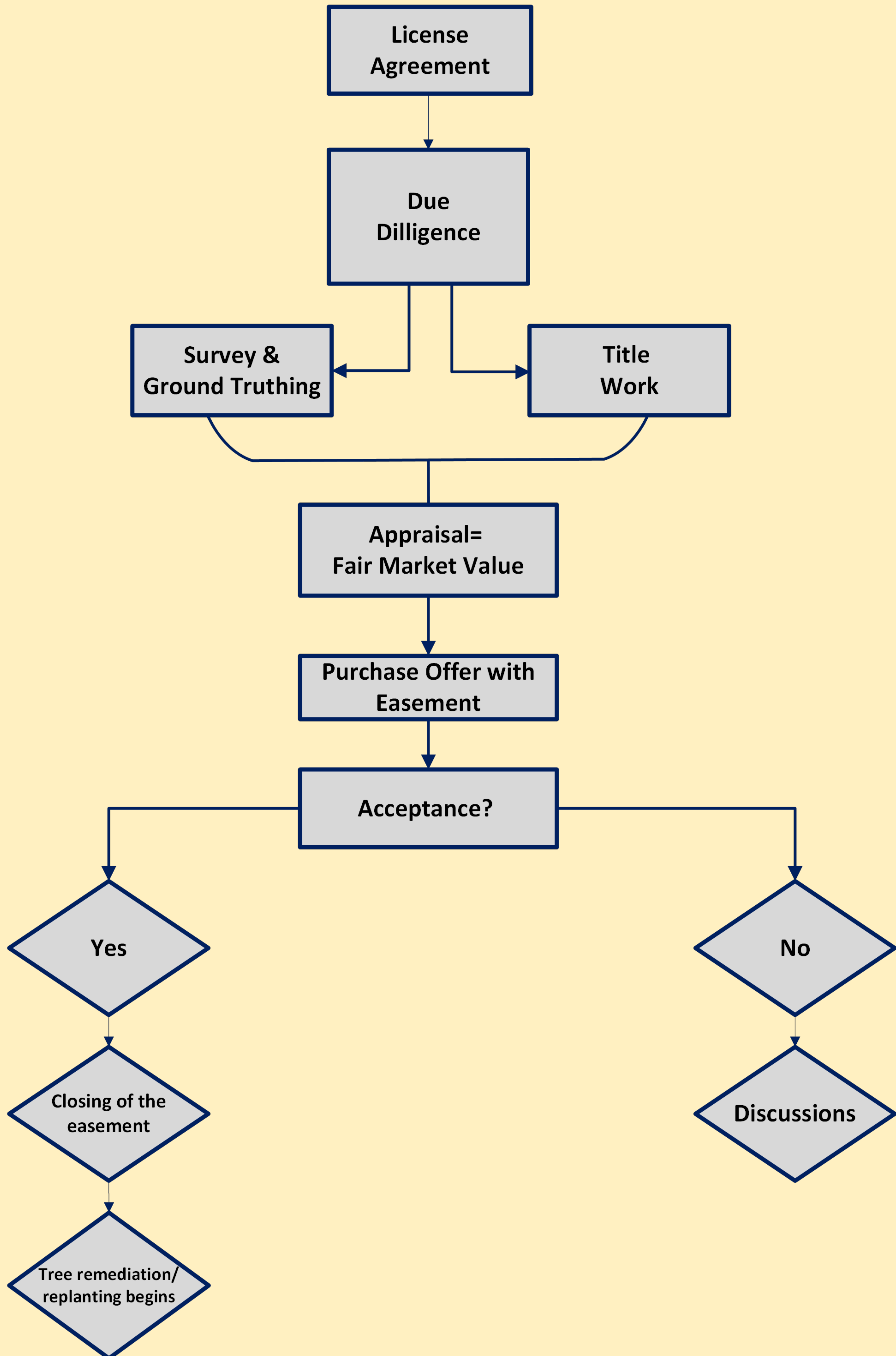
For a copy of the zoning ordinance
scan here:



Approximately 400 trees must be removed for operational necessity and FAA Regulations

AVIGATION "AIRSPACE" EASEMENT

Easement Process

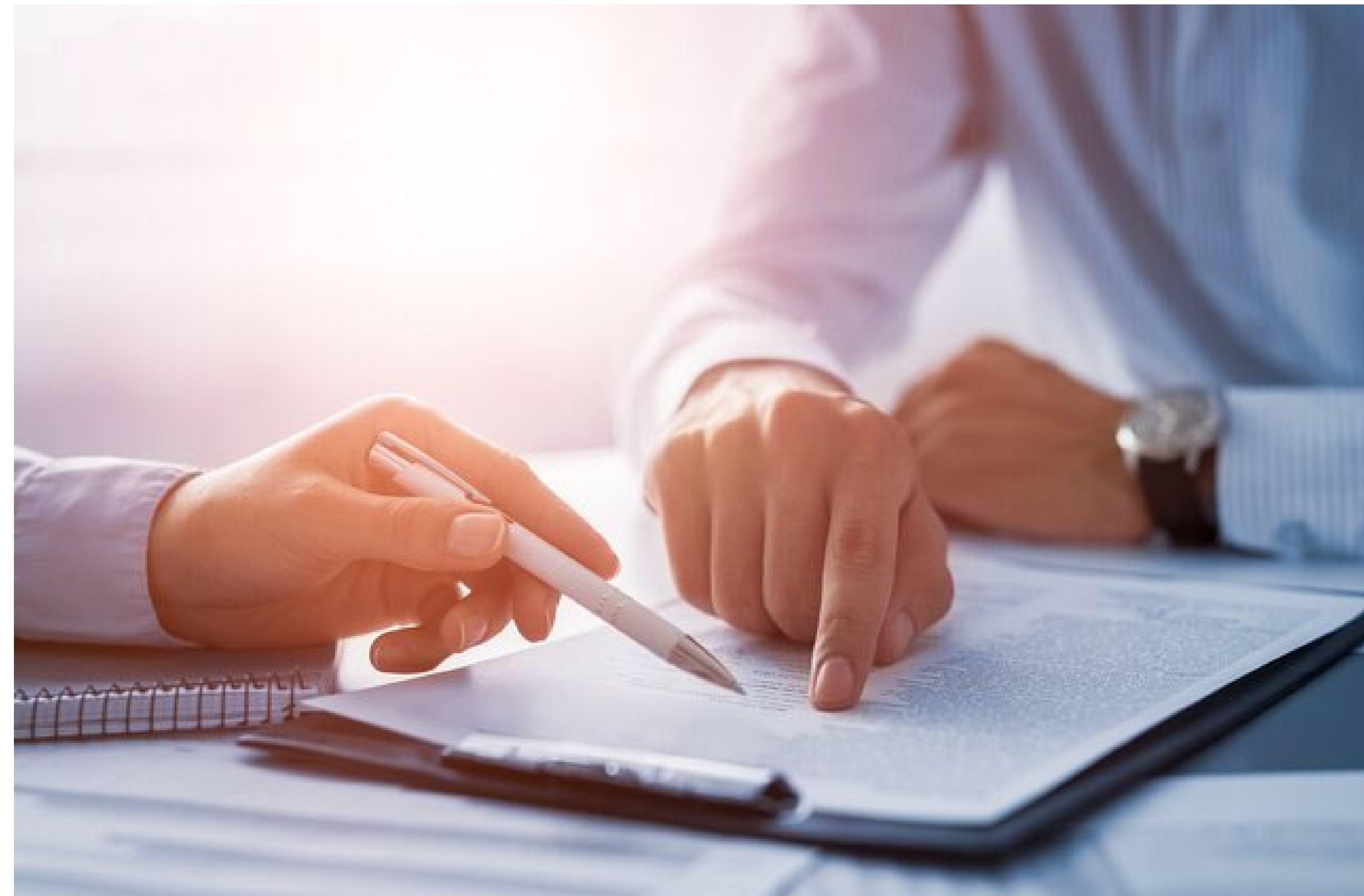


LICENSE AGREEMENT

The Navy needs access to private property for valuation and survey to support the aviation easement.

Navy License

- **Property owners' signature required.**
- **If you've already signed a license agreement**, we need your signature on an amendment to the license that includes property valuation services.
- Short-term license – **Not to exceed 2027**
 - No cost to homeowner
 - Requires Navy and/or Navy contractor to provide at least 7 days prior notice before accessing your property
 - Work will comply with City of Norfolk ordinances
- License covers access for:
 - Valuation (appraisal) purposes
 - Survey
 - Future tree assessments



Tonight, we have licensing agreements for your signature.

Ask us how!

Government photo ID is required.

Approximately 400 trees must be removed for operational necessity and FAA Regulations

Tree Removal and Replanting Process

REQUIRED REPLANTING CHESAPEAKE BAY

**Within Red Line*

SIGNED NAVY LICENSE
AGREEMENT

SURVEY & APPRAISAL

EASEMENT (SEE REAL ESTATE
STATION EASEMENT PROCESS
FLOWCHART)

CITY PERMIT ISSUED TO NAVY

NAVY SITE VISIT*

NAVY TO DISCUSS OPTIONS
WITH PROPERTY OWNER

NAVY TO CONTACT OWNER FOR
INITIAL TREE REMOVAL*

NAVY CONTACTS PROPERTY
OWNER FOR SUBSEQUENT TREE
REMOVAL/REPLANTING PHASES*

CITY HAS OPTION TO INSPECT
REPLANTING WITHIN 2 YEARS

OPTIONAL REPLANTING

SIGNED NAVY LICENSE
AGREEMENT

SURVEY & APPRAISAL

EASEMENT (SEE REAL ESTATE
STATION EASEMENT PROCESS
FLOWCHART)

NAVY SITE VISIT*

NAVY TO DISCUSS OPTIONS
WITH PROPERTY OWNER

NAVY TO CONTACT PROPERTY
OWNER TO INITIATE TREE
REMOVAL*

NAVY CONTACTS PROPERTY
OWNER FOR SUBSEQUENT TREE
REMOVAL. REPLANTING PHASES*

REQUIRED REPLANTING CITY RIGHT OF WAY

EASEMENT (SEE EASEMENT
PROCESS FLOWCHART)

CITY PERMIT ISSUED TO NAVY*

NAVY SITE VISIT*

NAVY TO NOTIFY NEARBY
HOMES TO INITIATE TREE
REMOVAL*

NAVY CONTACTS NEARBY HOMES
FOR SUBSEQUENT TREE
REMOVAL/REPLANTING PHASES*

***Indicates minimum 7-day notice to
homeowner or nearby homes for each phase**

TREE REMOVAL AND REPLANTING AREA



Approximately 400 trees must be removed for operational necessity and FAA Regulations

TREE REMOVAL

Tree removal and replanting is done at no cost to the property owner.

Tree Removal

- **What to expect:**
 - Contractor Representatives to inspect trees for eagles and other endangered species
 - Special equipment may be required for some large trees or difficult to access trees
 - Replanting may not occur immediately after removal
 - Navy will conduct routine inspections of ongoing work
- **Removal schedule will be coordinated with property owners in advance (minimum 7 days notice)**



Tree Removal Process

- **Different crews may do different tasks:**
 - Branches are chipped and removed off-site
 - Cranes may be used for large trunk or log removal or difficult access
 - Stumps ground where possible
 - Area raked and seeded
- **Delays may occur between each task as crews are also aligned for efficiency**

Approximately 400 trees must be removed for operational necessity and FAA Regulations

TREE REPLANTING

Tree removal and replanting is done at no cost to the property owner.

Tree Replanting

Planting season is Halloween to Valentine's Day

- All replanting will be native species, small canopy trees or shrubs
- All new trees and shrubs must meet city requirements
 - On city property or within Chesapeake Bay Preservation Area buffer - replacements are determined by the number of trees removed and their size.
 - On private property outside the City Replanting Area – tree replanting is encouraged but optional
- Property owners will have replanting options (Trees, shrubs, ground cover)
- The trees will be guaranteed for 1 year following installation
 - Property owner is responsible for watering.

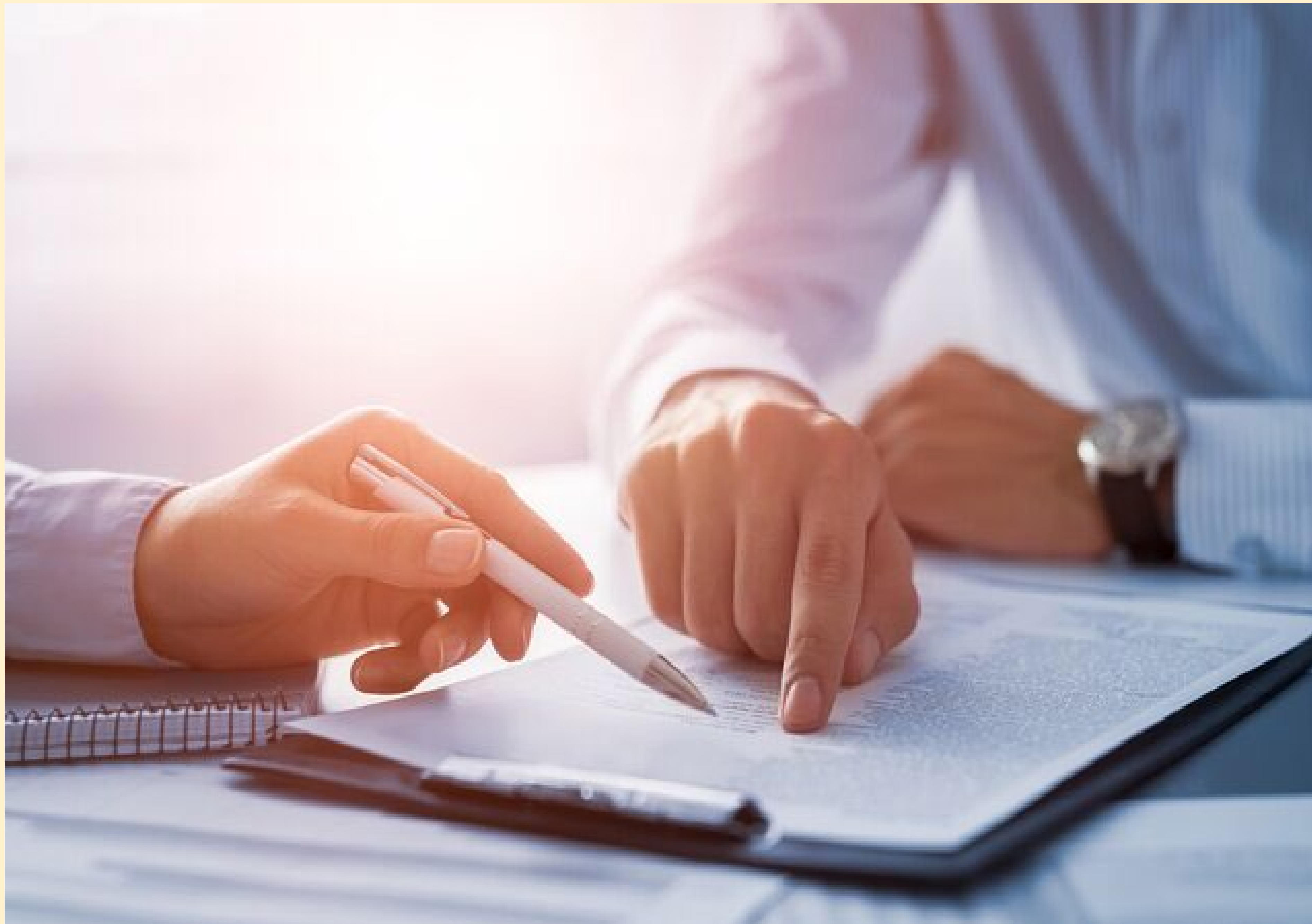


Tree Replanting Requirements

- Trees inside the Chesapeake Bay Preservation Area buffer (red line) or on City Property:
 - 24 inches diameter or less – Replace with (2) 1.5" diameter trees
 - 24-36 inches diameter – Replace with (4) 1.5" diameter trees, based on site conditions
 - Over 36 inches diameter - replacements based on tree health by a certified arborist
- **Diameter is measured at 4.5 feet from the ground**

Approximately 400 trees must be removed for operational necessity and FAA Regulations

SIGN LICENSE AGREEMENTS HERE



- ✓ Please ensure you have your government-issued photo identification readily available.
- ✓ If you have previously executed a license agreement, please inform us, an amendment to that agreement will be required.
- ✓ Please provide your property address so we can furnish you with the correct agreement.